

Biolab Medical Unit

9 Weymouth Street, London W1W 6DB, UK

Tel: (44) 020 7636-5959/5905 Fax: 020 7580-3910 E-mail: info@biolab.co.uk Internet: www.biolab.co.uk

Biolab reference: **XXXX/YYYY/F15**

Date: **02/06/2015**

Clinician's reference:

Referred by:

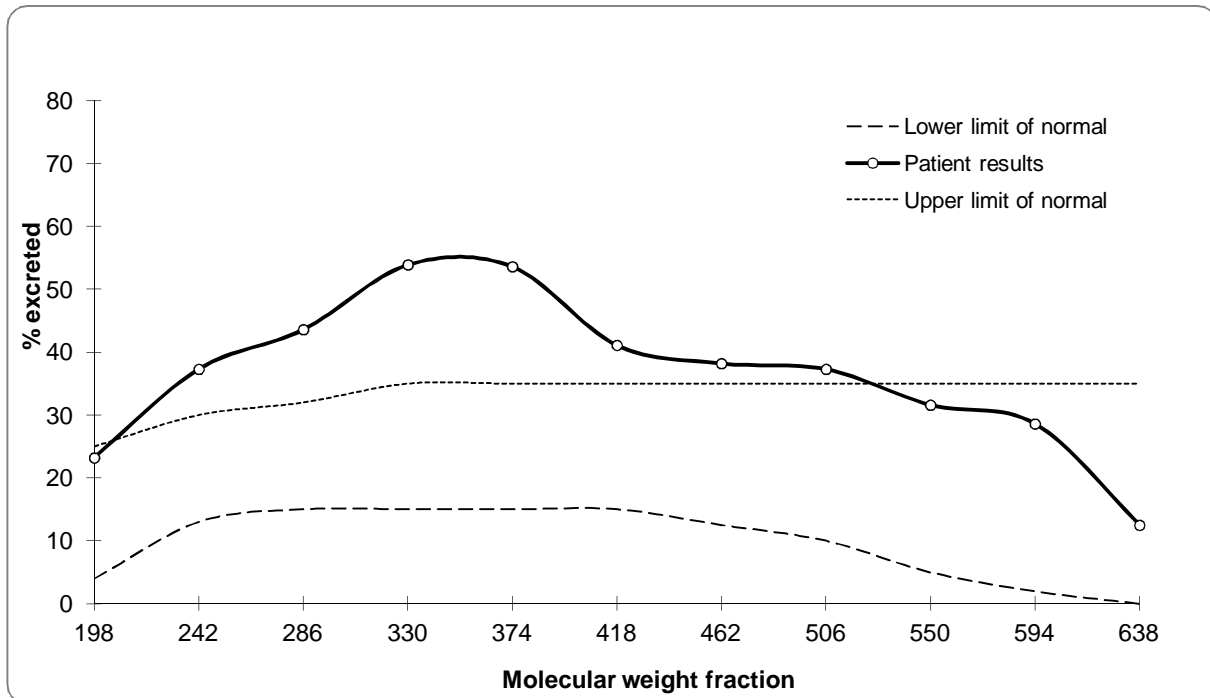
Patient: **MRS SAMPLE PATIENT**

Age: **48**

Sex: **Female**

Intestinal Permeability Profile Using polyethylene glycol (PEG 400)

Fraction	Molecular weight	Dose (mg)	Recovery in urine (6 hour collection)		Reference range
			mg	%	
1	198	25.5	5.9	23.2	4.0 - 25.0
2	242	86.7	32.3	37.3	13.0 - 30.0
3	286	185.1	80.7	43.6	15.0 - 32.0
4	330	363.6	196.0	53.9	15.0 - 35.0
5	374	503.1	269.7	53.6	15.0 - 35.0
6	418	542.1	222.8	41.1	15.0 - 35.0
7	462	479.4	183.1	38.2	12.5 - 35.0
8	506	360.6	134.5	37.3	10.0 - 35.0
9	550	246.0	77.7	31.6	5.0 - 35.0
10	594	138.9	39.7	28.6	2.0 - 35.0
11	638	68.7	8.6	12.5	0.0 - 35.0
TOTAL:		3000	1251.1		



Comment:

Increase in gut permeability to PEG between molecular weights 242 and 506.